



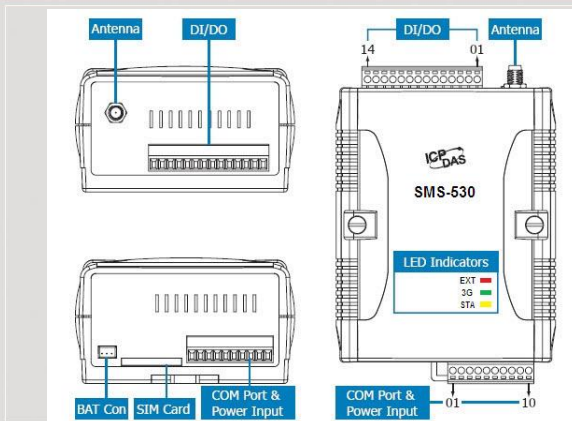
M2M Series Products



Intelligent 3G SMS Alarm Controller



SMS-530



Dimensions

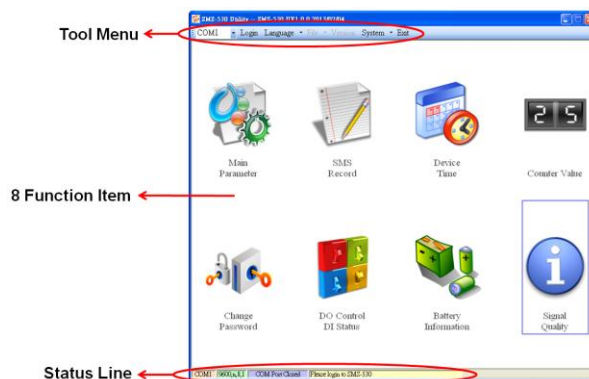
SMS-530 is an intelligent 3G SMS controller for industry applications with the simple commands and SMS tunnel function, and power can be input by external power or Li-ion Battery. Applying SMS-530, the SMS report can be sent by defined time or DI/counter event trigger. This can be a remote control and alarm system allowing you to use your mobile phone to monitor and control your business from any location. Its alarm facilities provide a flexible way to distribute critical alarm information to any number of mobile phone users. SMS-530 can monitor up to 10 digital inputs (6 counters). The SMS-530 also has 2 Digital output which can be activated via DI trigger or SMS to control the lamps, pumps, heaters...etc.

Features

- Support Quad-band GSM 850/900/1800/1900 MHz frequency
- Support Quad-band WCDMA 850/900/1900/2100 MHz frequency
- Identify ASCII or Unicode SMS Automatically
- Support max. 70 Unicode Characters
- Support max. 140 ASCII Characters
- Built-in ASCII Commands and SMS tunnel Communication Modes
- Max. 10 Default Phone Numbers
- Industrial Design with Surge Protection
- Support SMS setting and control
- 10 DI (6 Counter), 2 DO, 2 RS-232 port
- Digital input support NC/NO/Counter modes
- Send alarm SMS by DI trigger Support simple command to send SMS Support DC +10 ~ +30 V DC Power Input
- Support 3.7 V Li-ion Battery Backup

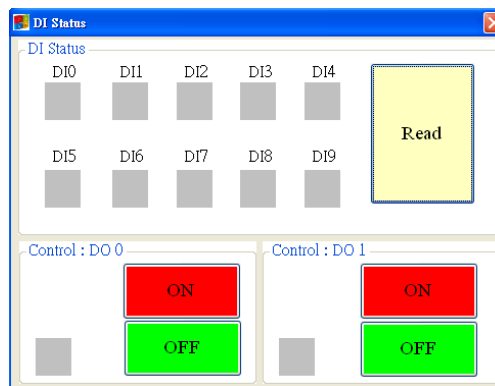
Utility

ICP DAS provide graphic tool for users to configure SMS-530 via RS-232. The utility also can help users to test the SMS-530 in the Lab before they apply in the real site.



I/O Interface

I/O	Channel number	Specification
DI	10	Input type : Sink or Source, Isolated channel with common power or ground On Voltage : +3.5V ~ +24V Off Voltage : +1V Max
DO	2	Output type : Isolation Load Voltage : +24V Max. Load Current : 100mA Max





Hardware Specifications

System	
CPU	32 bit, Microprocessor inside with 96MHz
RTC	Gives time(sec, min, hour) & date, leap year compensation from 1980 to 2079
WDT(watchdog)	Yes
Comm. Interface	
COM2	RS-232 : Tx,D,RxD,GND for configuration
COM3	RS-232 : Tx,D,RxD,GND for communication with other devices
3G System	
Frequency Band	WCDMA Quad-Band 850/900/1900/2100 MHz
Power Class	Class 3 (250mW @ WCDMA/HSPA)
2G System	
Frequency Band	GSM Quad-Band 850/900/1800/1900 MHz
Coding Schemes	CS 1, CS 2, CS 3, CS 4
SMS	PDU mode
SMS Format	Sending : UCS2 Receiving : UCS2/7bits
General	
Power Requirement	2W; Unregulated +10V _{DC} ~ +30V _{DC} . Support 3.7V Li-battery backup
LEDs	3 indicator LEDs
Mechanical	
Casing	Plastic
Dimensions	91mm x 132mm x 52mm (long*width* high)
Installation	DIN-Rail
Environment	
Operation Temp.	-25°C to 55°C
Storage Temp.	-40°C to 80°C
Humidity	5~95% non-condensing

Applications



Ordering Information

SMS-530 CR

Intelligent 3G SMS Alarm Controller (RoHS)